

Laminate flooring survey

Heritage, one of the new collections from Klikka report on page 68

Paper trail

Laminate flooring continues to catch the eye of specifiers in certain locations:

Finsa UK has introduced a new range of laminate designs called FINfloor Quattro Style V-Groove AC4. This is an 8mm micro bevel four-sided v-groove measuring 1,310mm x 132mm and available in nine colours, said to create longer, thinner boards.

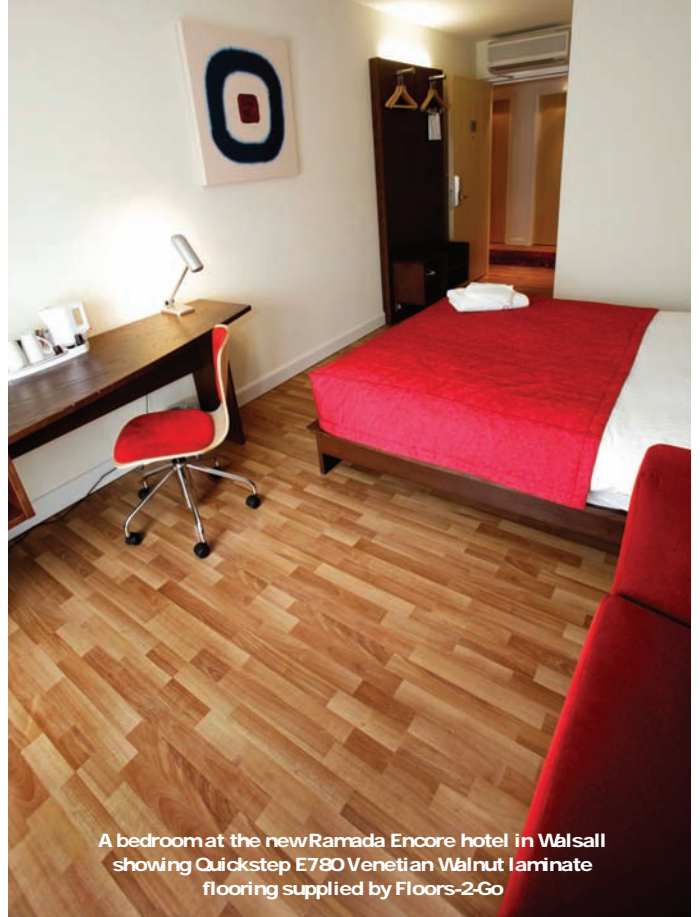
FINfloor Quattro Style Wood Impression AC4 8mm 1,310 x 132mm is now available in five new oak colours and is a micro bevel four sided v-groove with an emboss-in-register finish, which means the contours of the overlay follow the grain of the wood design, giving a natural looking finish, according to the company.

All Finsa's laminate flooring is now made under the Uniclic license.

Floors-2-Go supplied floorcoverings, including laminates for the new flagship Ramada Encore hotel in Walsall. The hotel has been designed around a central hub area, which offers guests an informal open plan gathering area and contemporary eating area, whilst the 121 guest rooms offer the latest in ergonomic work spaces.

The bedrooms feature Quickstep E780 Venetian Walnut laminate flooring from Floors-2-Go while its 3-strip Kempas engineered wood coated with a ceramic lacquer was selected for the hotel's central hub area, including the dining area and edgings in corridors.

www.floors2go.co.uk/contracts



A bedroom at the new Ramada Encore hotel in Walsall showing Quickstep E780 Venetian Walnut laminate flooring supplied by Floors-2-Go

IDS guarantees delivery on core product lines within 24-48 hours with Just in Time delivery from any of its 10 regional branches. Nationwide, the company operates a fleet of over 100 vehicles offering the flexibility of size and a capacity

to service customers' needs efficiently and responsively. IDS makes more than 1,200 deliveries daily and claims a 98% on-time, in-full service record.

The company boasts an in depth stockholding of key laminate

brands covering all the bases for design finishes, species, textures and colours. It stocks entry level Krono-Original, mid-market Quick Step and the top-end

Faus brand, giving a wide palette of laminate flooring finishes. All product lines are updated in step with manufacturers' launches to reflect innovations in surface textures, as well as design and colour trends. New additions to the Krono Original brand are expected this month.

All brands are fully covered by a comprehensive retailer support package.

Says John Bagshaw, md at IDS: 'Excellent service is the measure of our business and we are here to make life easy for our customers. Through our extensive stockholding we can guarantee customers immediate access to a superb laminate flooring portfolio.'

www.vidsurfaces.co.uk

Interfloor says its Timbermate Collection of three underlays has advanced noise reducing benefits for laminate floorcoverings. All feature a built-in vapourstop barrier, eliminating the need for extra moisture protection such as polythene sheeting.

Timbermate Silentfloor Gold (53 SONE tested) is said to offer the highest specification acoustic performance. A 4.20mm gauge underlay, this is described as a superior product.

Timbermate Excel (56 SONE tested) is the original 'all in one' rubber underlay with a built-in vapourstop barrier. A 3.75mm gauge high density resilient rubber underlay, it is designed to meet most domestic and contract needs.

